



WASHINGTON



**NORTHWEST CONSTRUCTION & DEVELOPMENT CO. LTD.**  
LUXURY ESTATE TOWN HOMES & CONDOMINIUMS

Suite # 12, Golden Triangle Mall, Ironshore, Montego Bay, Jamaica.  
TEL: 876-953-2422 USA: 954-246-3438 UK: 020 70999168 FAX: 876-953-3130  
EMAIL: [northwestja@cwjamaica.com](mailto:northwestja@cwjamaica.com) [www.northwestja.com](http://www.northwestja.com)

**NORTHWEST CONSTRUCTION & DEVELOPMENT CO. LTD.**  
LUXURY ESTATE TOWN HOMES & CONDOMINIUMS



*Site Map*

# Features

## Community Features

- Gated entry with electronically controlled gate
- Resort style pool and cabana
- Brick paved walkways
- Stand-by generator
- State of art security system with cameras and electronic beams
- Impressive entrance features with guard house
- Architecturally designed lush tropical landscaping
- Decorative street lighting
- Architectural controlled standards and restrictive covenant to preserve and enhance property value
- Great location with easy access to major entertainment, shopping and more

## Exterior Features

- Covered entry
- All underground utilities
- Two (2) private parking spaces for each home owner
- Ample visitor parking
- Private entry courtyard and interlocking paved walkway leading to courtyard entry (townhouse only)

## Interior Features

- Energy efficient control split air conditioning
- Custom crafted kitchen and bathroom cabinets
  - Granite counter top for both kitchen and bathrooms
    - Ice maker connection
    - Washer and Dryer connection
    - Pre-wired for cable and telephone



# D' WASHINGTON

## Where Dreams Meet Reality

Welcome to D'Washington, a unique enclave, comprising of townhouses and apartments, with all the glamour and appeal you dream of; combined with the value, quality and convenience you hope for. It is nestled within Ironshore Estate, one of Montego Bay's most coveted addresses.

Live in D'Washington and you will live in a place where beauty, elegance and relaxation are a part of your every day life. Socialize with friends and neighbors at the resort style pool or the community cabana while enjoying the serenity of this peaceful haven or retreat into your lavish townhouse residence with its superb architectural design and private courtyard.

One of the many advantages of this magnificently planned gated community is its location.... just minutes from: fine dining, luxurious shopping, entertainment, supermarkets, schools, international airport, major hotel chains, convention center, beaches and several world renowned golf courses, giving you the ultimate in choice and convenience.

You will feel a part of something very special.....

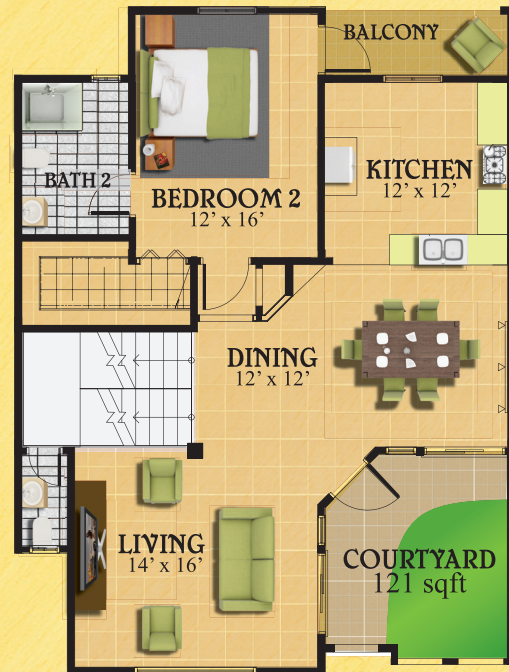
## Welcome Home



# The Montego

3 Bedrooms, 3 1/2 Baths, plus Helpers' on suite, Kitchen, Laundry, Garage

## MAIN FLOOR PLAN



## UPPER FLOOR PLAN



## LOWER FLOOR PLAN



MAIN FLOOR PLAN	1309 sqft.
UPPER FLOOR PLAN	905 sqft.
LOWER FLOOR PLAN	829 sqft.
<b>TOTAL AREA =</b>	<b>3043 sqft.</b>

# The Nassau

Offering you 2 & 3 Bedroom Units

## TYPICAL FLOOR PLAN



TYPICAL FLOOR PLAN  
● (2 Bedroom Apt.)

**TOTAL AREA = 1377 sqft.**

## TYPICAL FLOOR PLAN

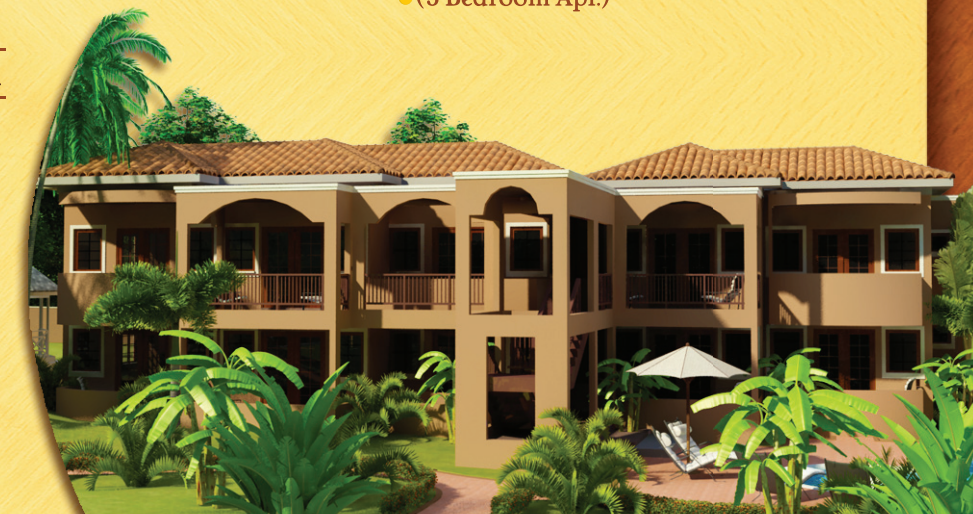
● (3 Bedroom Apt.)

TYPICAL FLOOR PLAN  
● (3 Bedroom Apt.)

**TOTAL AREA = 1573 sqft.**



Final sales subject to Board approval.



All dimensions are approximate and subject to change. Sketches, renderings graphic material, plans specifications terms, conditions and statements contained in this brochure are proposed only, and the developer reserves the right to modify, revise or withdraw any or all without prior notice.

# The Santiago

2 Bedrooms, 2 1/2 Baths, Kitchen, Laundry

## TYPICAL FLOOR PLAN



## TYPICAL FLOOR PLAN

TOTAL AREA = 1377 sqft.



Final sales subject to Board approval.

# The Kingston

2 Bedrooms, 2 1/2 Baths, Kitchen, Laundry

## MAIN FLOOR PLAN



## UPPER FLOOR PLAN



MAIN FLOOR PLAN 823 sqft.  
 UPPER FLOOR PLAN 692 sqft.  
 TOTAL AREA = 1515 sqft.



All dimensions are approximate and subject to change. Sketches, renderings graphic material, plans specifications terms, conditions and statements contained in this brochure are proposed only, and the developer reserves the right to modify, revise or withdraw any or all without prior notice.

# Bird's Eye of Site



Final sales subject to Board approval.

All dimensions are approximate and subject to change. Sketches, renderings graphic material, plans specifications terms, conditions and statements contained in this brochure are proposed only, and the developer reserves the right to modify, revise or withdraw any or all without prior notice.